

Minions™ Soccer

Assembly and Installation Instructions



Single game configuration with Marquee Sign

Revision: B
Date: Apr 18, 2019

After unpacking and removing all shipping materials there are two main components



Main cage and Playfield section



Console/player section

Notes:

- If installing near a wall, it will be necessary to:
 - erect the scoreboard display panel
 - attach power cord
 - attach network cabling, if desired (not supplied)
 - and then roll the games closer to wall before completing assembly of front end

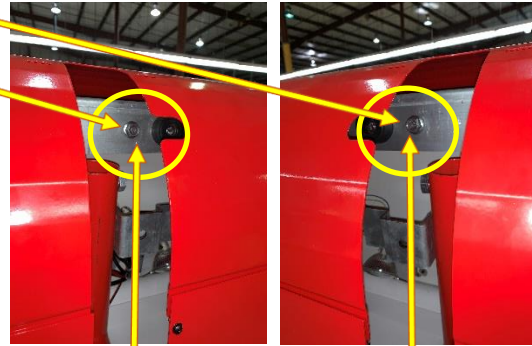
Preparation:

- Move game near its “final” setup location – leave room to access rear of game and erect display panel
- Ensure power connection is available
- Begin with erecting the scoreboard display panel

Erecting the scoreboard display



Rear view of game with scoreboard display in shipping position

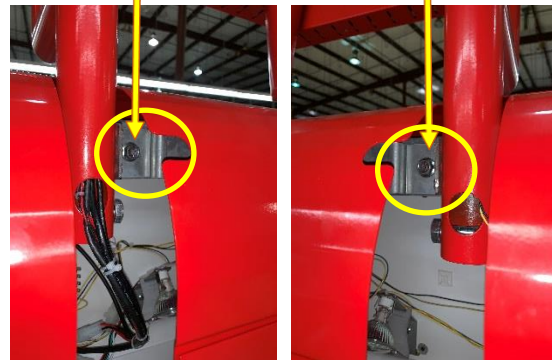


Remove these 2 bolts and save.

They will be re-used once panel is in place.



Swing the scoreboard display up and into position
This can be done by a single person from the ground



Re-Install the 2 bolts to secure the monitor

Install these cover plates over the openings to complete this operation. They may be packed separately or attached to the rear exterior wall of the game.



Installing the Single Game Top Sign:

1. Once the monitor is up, the Top Sign can be installed
2. There are 3 holes for screws as shown below (the sign should face the player)
3. Screws go into the rear of the monitor
4. Connect the power cable



View from front of game

Connect the power:

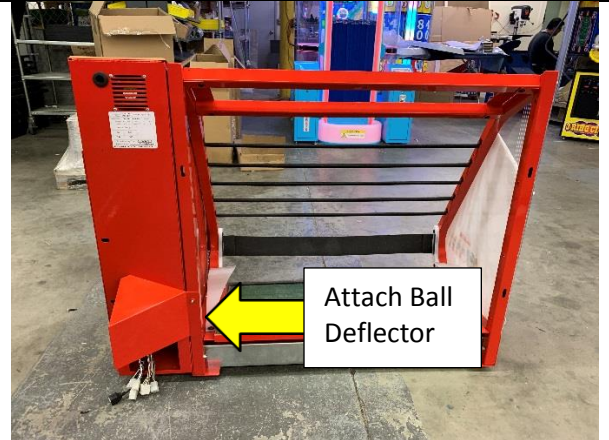
Once the Display Panel is erected and the rear of the games is clear, connect:

- Power cable to the game



If the game will be up against a wall, it can be moved to its 'final' position closer to the wall before connecting the front console to the game body.

Prepping the player console/coinbox section



Close-up of ball deflector



- Attach ball deflector with a single screw on the lower right slot.
- Install with screw in middle of slot and adjust as necessary when mating with game body.



Pull wire bundles from console and game body



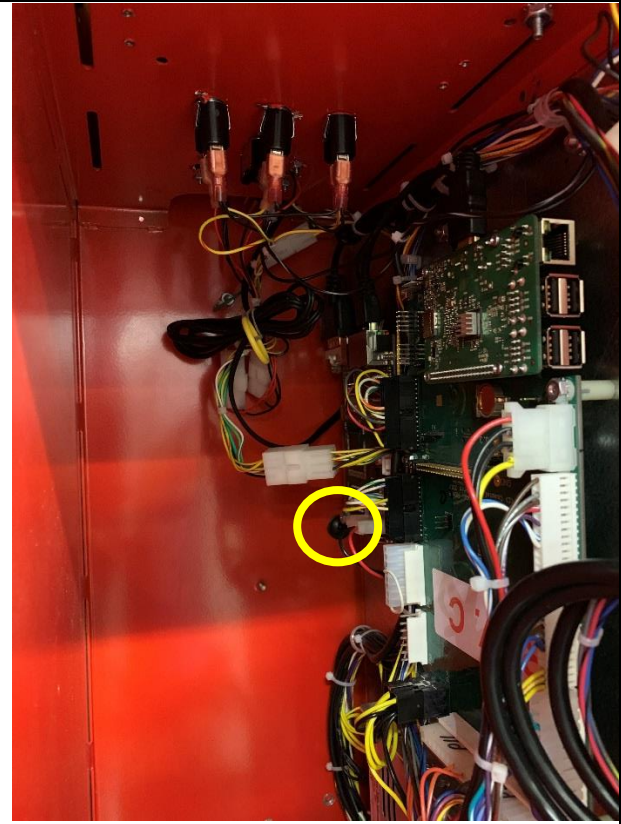
Make the matching connections

Tuck the mated connectors into the console as the console and body are brought together and attached, ensuring not to pinch or cut any wires or connectors.

Attach the player console to the main body of the game



Bolt the console section onto the
Main Playfield section



There is also a bolt inside the console as well

Apply power, turn the game on, let it go through its startup routine. Once complete, the game should go into attract mode.

For setting up specific settings, payouts, Wi-Fi, and game modes please refer to the Operating Manual